

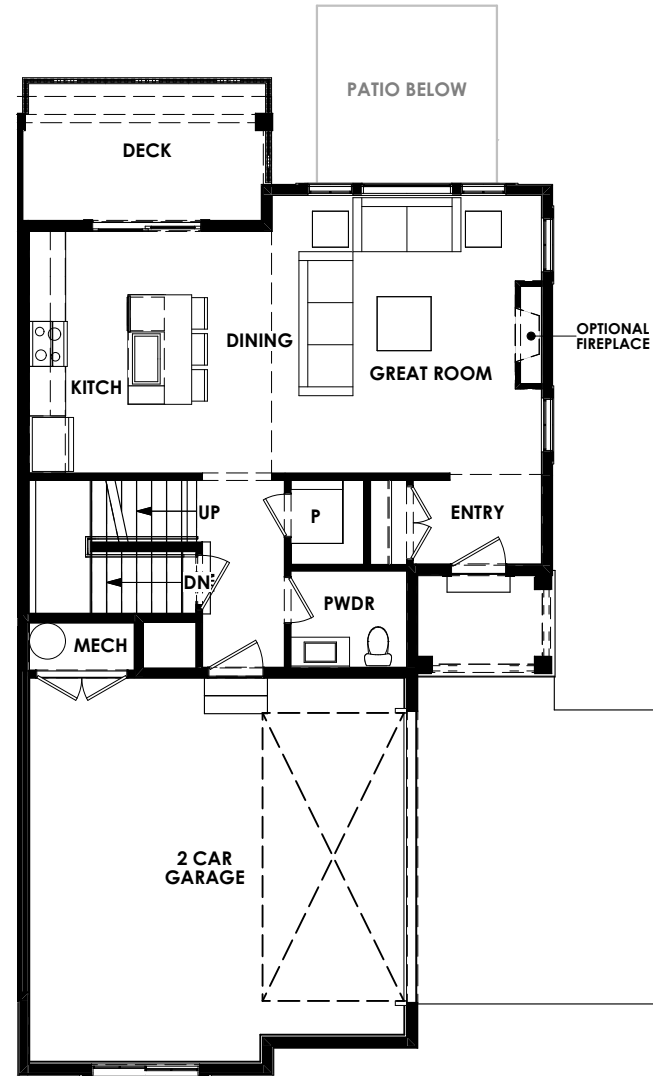


Spring Run

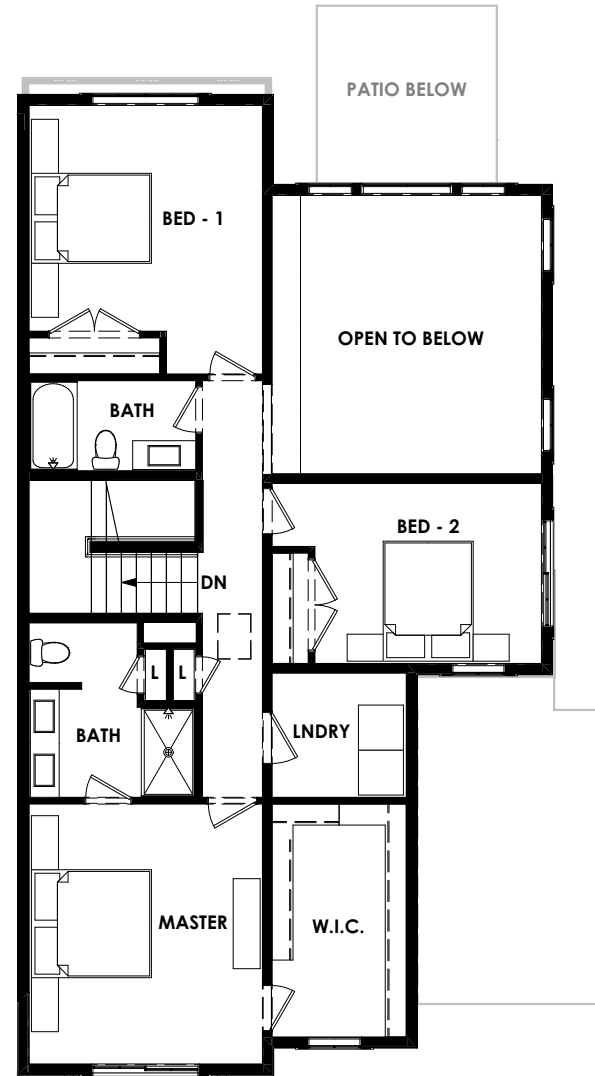
THE DOVER



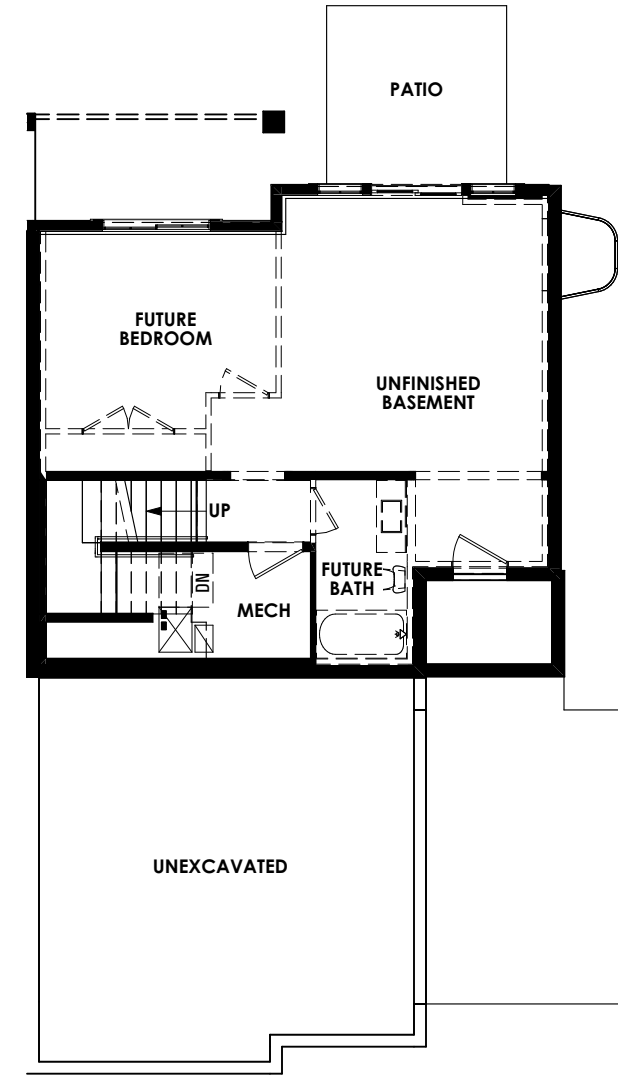
[Front Elevation]



1ST LEVEL



2ND LEVEL



BASEMENT

SPECIFICATIONS:

- 3-BED
- 3-Bath
- 2-Car Garage
- 9ft. Ceiling on Main
- Vaulted Area on Main
- Unfinished Basement
- Back Patio w/ Lawn

CALCULATIONS:

1st Level	713 sq. ft.
2nd Level	1,095 sq. ft.
Total Finished	1,808 sq. ft.
Basement (unfinished)	779 sq. ft.
Total Square Feet w/ Basement:	2,587 sq. ft.
2-Car Garage	474 sq. ft.
Total Square Feet Including Garage:	3,061 sq. ft.